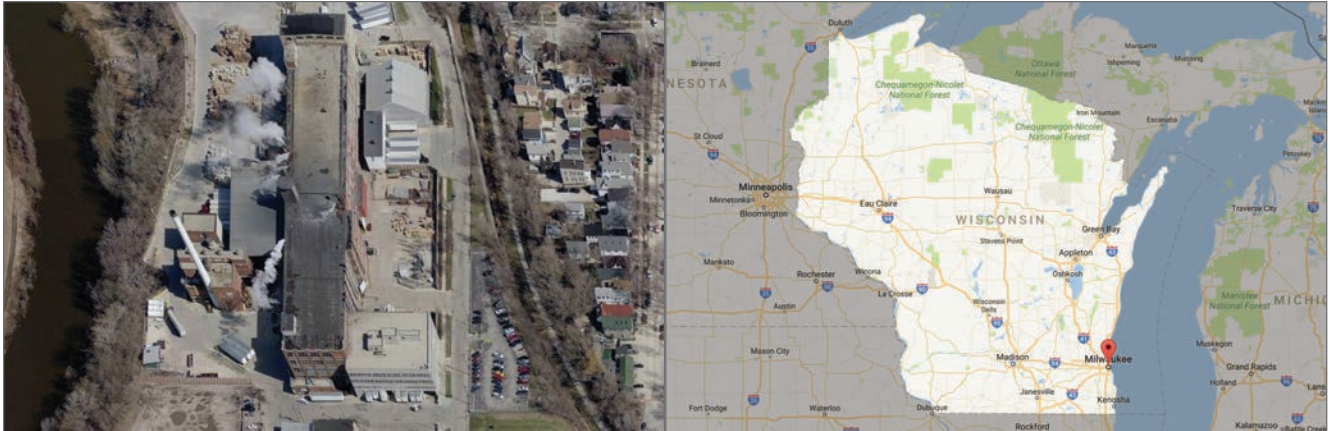


Wisconsin Paperboard and Specialty Converting



Location:

Milwaukee, WI

Trim:

- ✓ Machine #1: 115"
- ✓ Machine #2: 124"

Caliper Range:

- ✓ Machine #1: .020" – .050"
- ✓ Machine #2: .018" – .055"

Rolls:

- ✓ Widths:
 - Machine #1 - 3" – 99"
 - Machine #2 - 4" – 102"
- ✓ 50" – 70" diameters
- ✓ 4", 6", 8", 12" cores
- ✓ Ribbon slit tolerance: $\pm 1/32"$

Certifications:

- ✓ FSC[®], SFI[®] and PEFC[®] Chain of Custody Standard for Recycled Paper
- ✓ FDA[®] Compliant for Dry Food Packaging
 - 21 CFR 176.170
 - 21 CFR 176.18
 - 21 CFR 176.260
- ✓ RPTA 100% Certified

Product Offerings:

- ✓ Tubing Grades
 - Ultra
 - Ultrex
- ✓ Fortex[®]
- ✓ Plain Chip
 - Tan or Grey
- ✓ Partition Chip
- ✓ Bending Chip
- ✓ Laminating Chip
 - Grey
 - Brown lined 1-side
 - Chocolate
 - Black 1-side
 - Solid Black
- ✓ Pasted Chip
 - Brown 1 or 2-sided
 - Grey
 - Solid Black
 - Black 1 and 2-sided

Specialty Converting:

- ✓ Laminator
- ✓ Ream Cutter
- ✓ Sheeter
- ✓ Slitter

Wisconsin Paperboard Mill *page 2***Round Corners (Hickcock Manual)**

- ✓ Corner radius capability: 1/4" and 1/2"
- ✓ Panel size min. = 6" x 6"
- ✓ Min. = .060"
- ✓ Panel size max. = 17 1/2" x 24"
- ✓ Max. = .160"

Round Corners – Integrated with slitter (RC)

- ✓ Corner radius capability: 1/4", 5/16", 3/8", 1/2"
- ✓ Panel size min. = 8" x 8"
- ✓ Min. = .060"
- ✓ Panel size max. = 13" x 13"
- ✓ Max. = .160"

**Converting Dept Capabilities
Roll Laminator**

- ✓ All Grades : .060" – .200" Caliper
- ✓ 18" minimum width
- ✓ 58" maximum width (untrimmed)
- ✓ 57" maximum width (trimmed)
- ✓ 24" minimum length
- ✓ 97" maximum length
- ✓ $\pm 1/32$ " tolerance on width -0" / +1/8" tolerance on length
- ✓ In-line scoring: 2" – 28 1/2"
- ✓ Scoring in machine direction, 2 score max.
- ✓ 3 ply (.060 - .160) and 4 ply (.161 - .200)
- ✓ Cores on 12"

Ream (Guillotine) Cutter

- ✓ .018" – .200" Caliper
- ✓ Maximum sheet size 84" x 84"
- ✓ Minimum sheet size 8 1/2" x 11"
- ✓ $\pm 1/32$ " tolerance (small lifts)
- ✓ $\pm 1/16$ " tolerance (normal lifts)

Offline Sheeter

- ✓ .018" – .055" Caliper
- ✓ 18" minimum width, 60" maximum width
- ✓ 26" minimum length, 80" maximum length
- ✓ $\pm 1/32$ " tolerance on width
- ✓ Length: .024 - .055 = $\pm 1/16$ "
- ✓ Length: .018 - .023 = $\pm 1/8$ "
 - Note: Any length under 30", add $\pm 1/16$
- ✓ In-line scoring: 2" – 28 1/2". Score machine direction up to 2 scores
- ✓ Cores on 12"

Slitter (Rotary Cutter)

- ✓ Sizes:
 - Panel size min. = 4.5" – 5"
 - Panel size max. = 42" – 17"
- ✓ Calipers:
 - Min. = .080"
 - Max. = .150"
- ✓ Master sheet in-feed:
 - 32" min. width
 - 38" min. length
 - 42" max. width
 - 52" max. length
- ✓ Tolerance: $\pm 1/64$ "
- ✓ Squareness can be held to .00075" per inch of panel length

📍 For more information: 1-414-319-3911